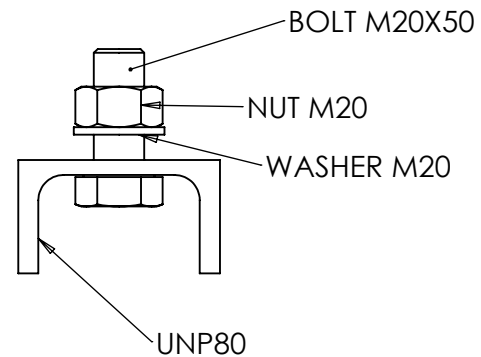
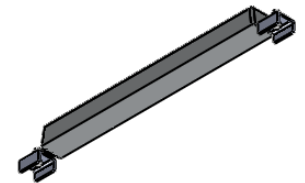


SECTION B-B
SCALE 1 : 3



NOTES:

1. Net Weight: 19.30 Kg
2. Gross Weight: 23.00 Kg
3. Insert Weight: 3.70 Kg
4. Insert quality:
Plate, bar sections: EN10025
grade S235 or S275
5. Insert Welding
All fabrication of steel
insert are according EN 10287
and EN 10288
6. Insert surface preparation
For aluminium anodes
minimum quality
ISO 8501-1 SA2 1/2
7. All dimensions are in mm



No	DATE	REVISION	REV/CHK	APPR

ANOTEC bvba
Brusselsestraat 49
1750 Lennik , Belgium

ANODE TYPE:
AFFP193

anotec
SACRIFICIAL ANODES

DESIGNED	P. P.	BELONGS	E. P. E.
STUDIED		PAGE	1/1
APPROVED		SCALE	1:2
DRAWING NUMBER	DATE	28.03.2014	
	CODE		